

Quick Service Guide: RIX 2V3B Booster Compressor

Date: 16 September 2025

This document was developed by [Build Health International](https://www.bhioxygen.org) to support global medical oxygen infrastructure planning, site preparation, operation, maintenance, and sustainability. Additional technical resources are available at www.bhioxygen.org.

This quick service guide for the RIX 2V3B booster compressor is designed to support technicians during preventative maintenance on booster compressors. It is not a step-by-step instruction manual for completing maintenance, but rather a reference tool to assist with the more challenging and detail-oriented aspects of the process. On the following pages, you will find reference points such as:

- Proper valve assembly
- Correct stage placement
- Identification and positioning of rings and components

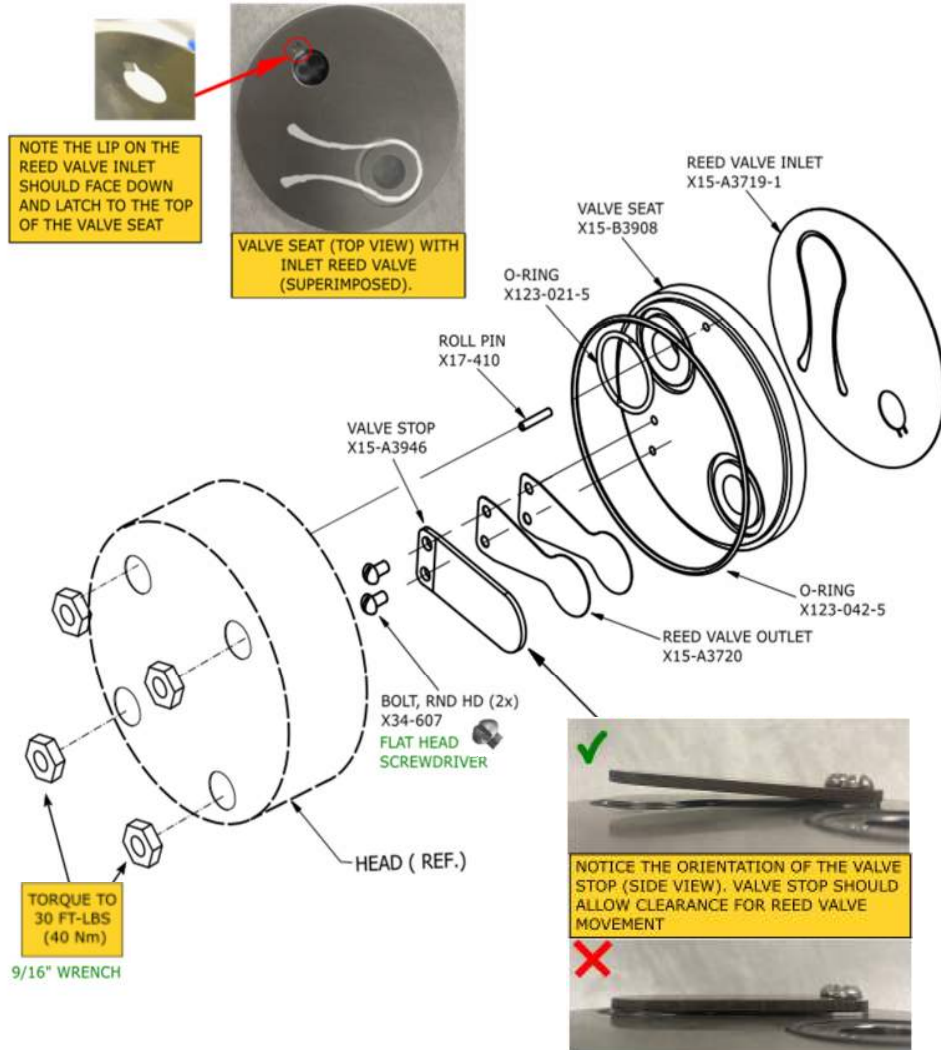
The intent is to provide clear, visual reminders that help reduce errors and ensure efficient, accurate maintenance.

The following pages are intended to be printed on A4 size paper and laminated for durability. Make sure to print at 100% scale without enlarging or modifying any of the image images to ensure the sizing guide sheets remain accurate. This is critical for verifying O-ring sizes, which will not display correctly if the images are resized. Store this guide in close proximity to the booster compressor for easy access during maintenance. By keeping this guide available at the point of use, technicians can quickly confirm critical details without searching through lengthy manuals.

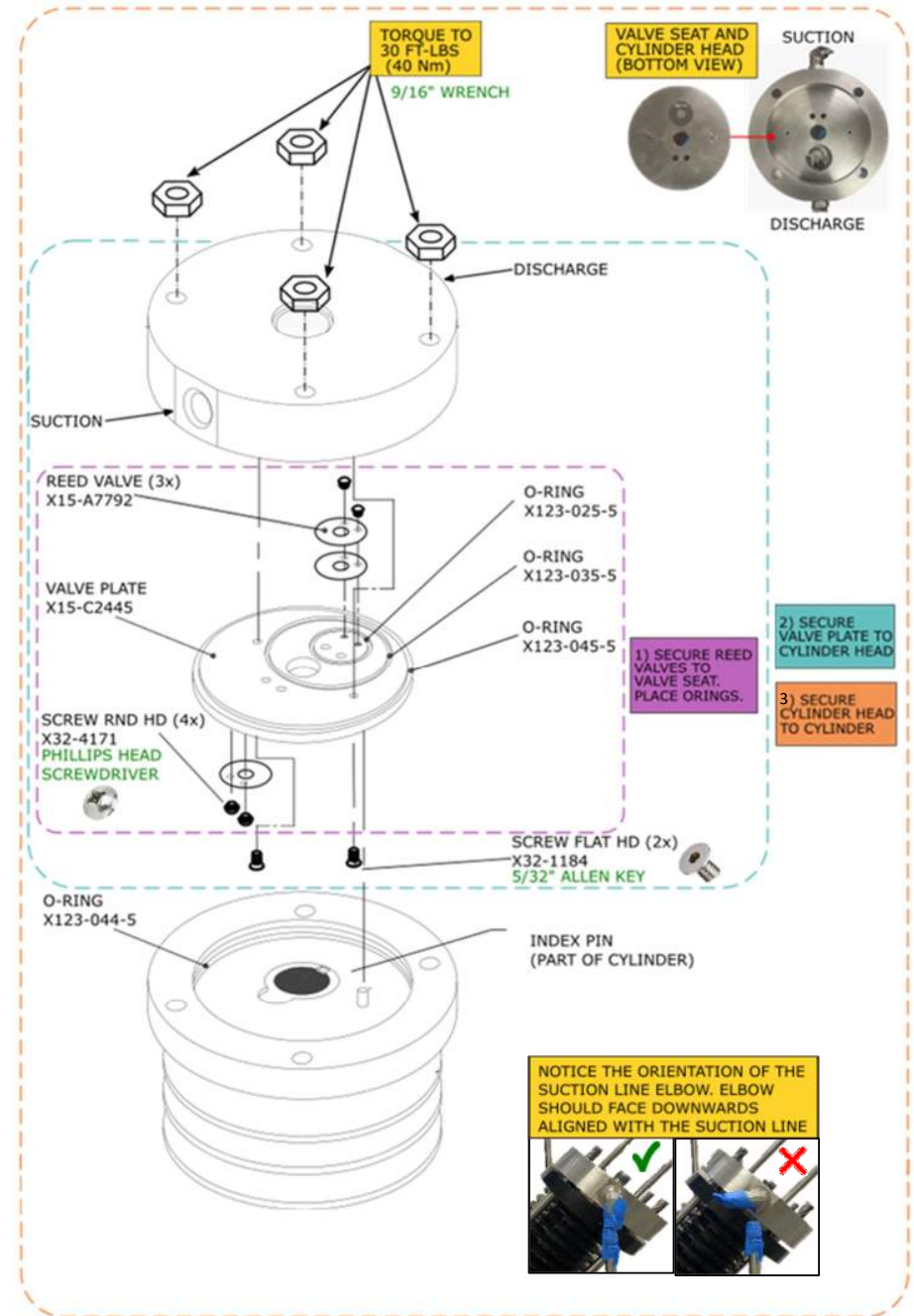
This guide is an independent reference document. It is not endorsed, published, or developed by the booster compressor manufacturer. Always consult the official service manual for complete instructions, safety guidelines, and detailed maintenance procedures.

RIX 2V3B QUICK SERVICE REFERENCE GUIDE

1st stage Valve Assembly

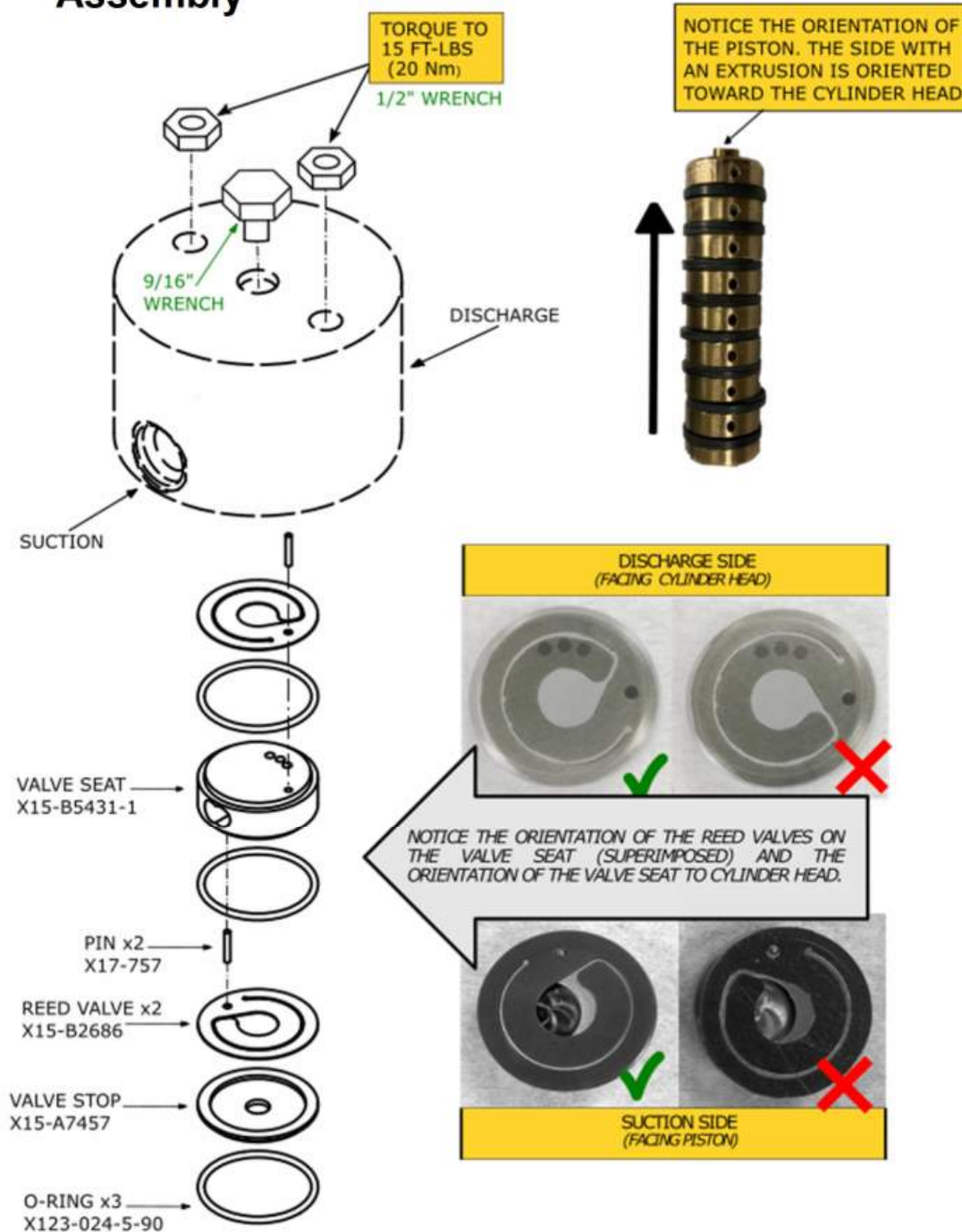


2nd stage Valve Assembly



RIX 2V3B QUICK SERVICE REFERENCE GUIDE

3rd stage Valve Assembly

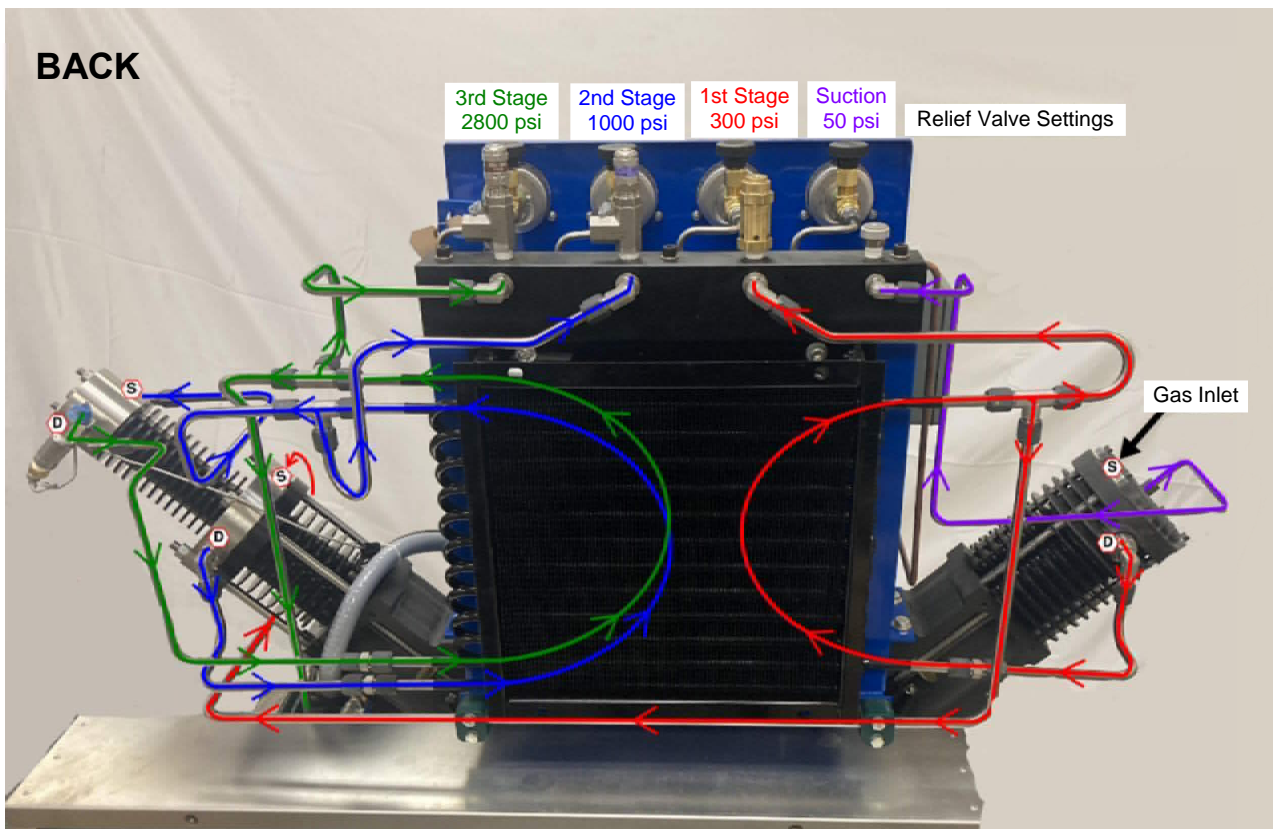
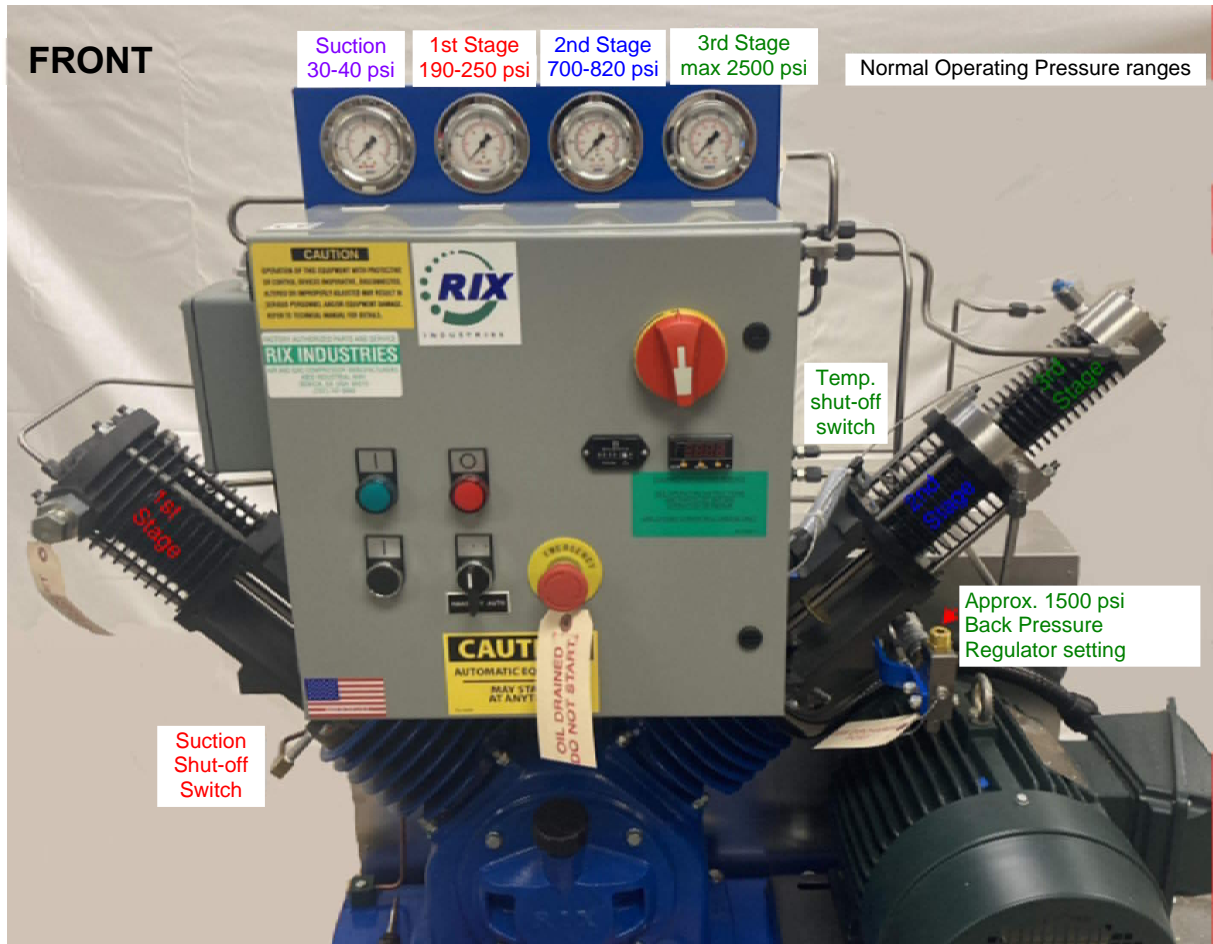


Normal Operating Pressure Ranges	
Suction	30-40 psig
1st Stage	190-250 psig
2nd Stage	700-820 psig
3rd Stage	up to 2500 psig
Back Pressure Regulator	approx. 1500 psig

Summary of needed parts
(4) Wrenches: 1/2", 9/16", 11/16", 3/4"
(2) Allen keys: 5/32", 5/64"
(2) Screw drivers: Flat head, Phillips
(2) Sockets: 1/2", 9/16"
Pick
Tape, gloves, alcohol
Piston rod tool, sleeve tool, torque wrench

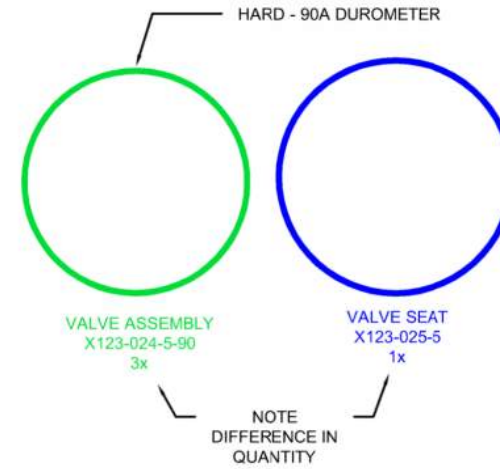
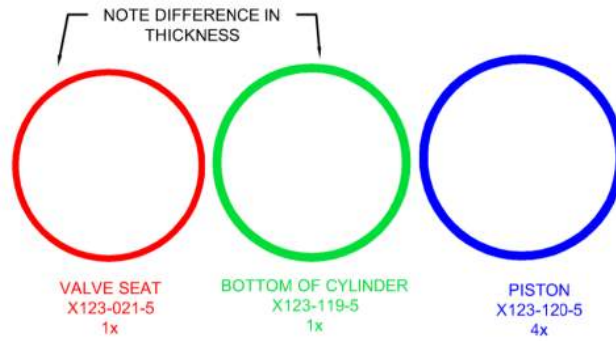
Relief Valve Settings	
Stage (Symbol)	Set Point
Suction (RV1)	50 psig
1st Stage (RV1)	300 psig
2nd Stage (RV2)	1000 psig
3rd Stage (RV3)	2800 psig

RIX 2V3B QUICK SERVICE REFERENCE GUIDE



RIX 2V3B QUICK SERVICE REFERENCE GUIDE

O-RING SIZING GUIDE



1ST STAGE
2ND STAGE
3RD STAGE

